



PHLEARN

HOW TO INSTALL LUTS IN PHOTOSHOP
STEP-BY-STEP GUIDE

WELCOME TO THE PHAMILY

Hi there! Welcome to the PHLEARN family! First of all, thank you for subscribing as a PRO member. We're glad you decided to join us.

You now have a set of powerful and easy-to-use editing tools to create breathtaking images and make your photos limitless.

The following guide will show you a couple of ways to install the LUTs on Photoshop.

Let's get you all set up!



INSTALLATION

HOW TO INSTALL THE LUTS

DOWNLOAD, UNZIP & TRANSFER TO YOUR COMPUTER

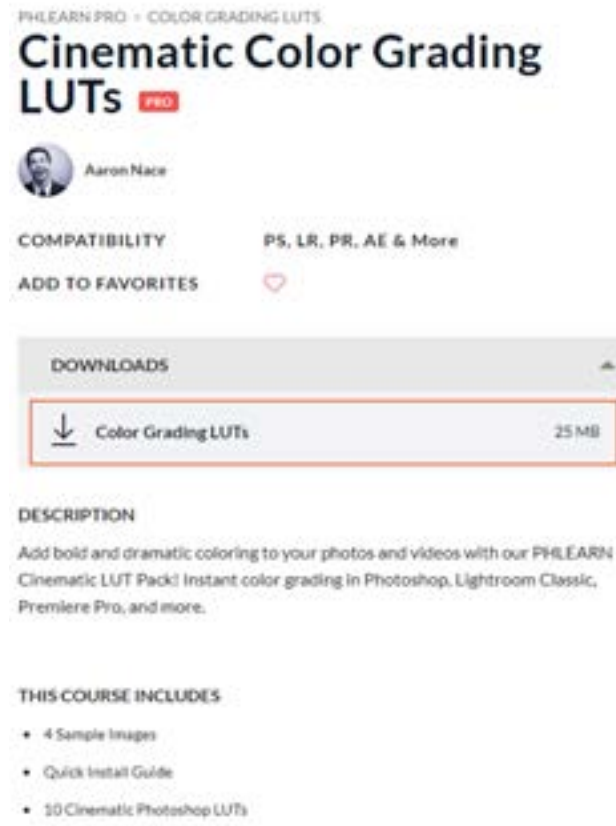
1. Using your computer, click the download button on the LUTs Pack web page.
2. Locate the LUTs Pack ZIP file in your Downloads folder.
3. Unzip the LUTs Pack ZIP file:

Windows: Right-click the ZIP file, and select Extract All... Choose where you want the preset folder to be created and click the Extract button.

Mac: Double-click on the ZIP file. A new folder will automatically be created with the LUT files inside.

4. Once the LUTs are unzipped you can use them in Photoshop.

There are two different ways to install LUTs in Photoshop, let's take a look at both!



PHLEARN PRO • COLOR GRADING LUTS

Cinematic Color Grading LUTs PRO

Aaron Nace

COMPATIBILITY PS, LR, PR, AE & More

ADD TO FAVORITES

DOWNLOADS

↓ Color Grading LUTs	25 MB
----------------------	-------

DESCRIPTION

Add bold and dramatic coloring to your photos and videos with our PHLEARN Cinematic LUT Pack! Instant color grading in Photoshop, Lightroom Classic, Premiere Pro, and more.

THIS COURSE INCLUDES

- 4 Sample Images
- Quick Install Guide
- 10 Cinematic Photoshop LUTs

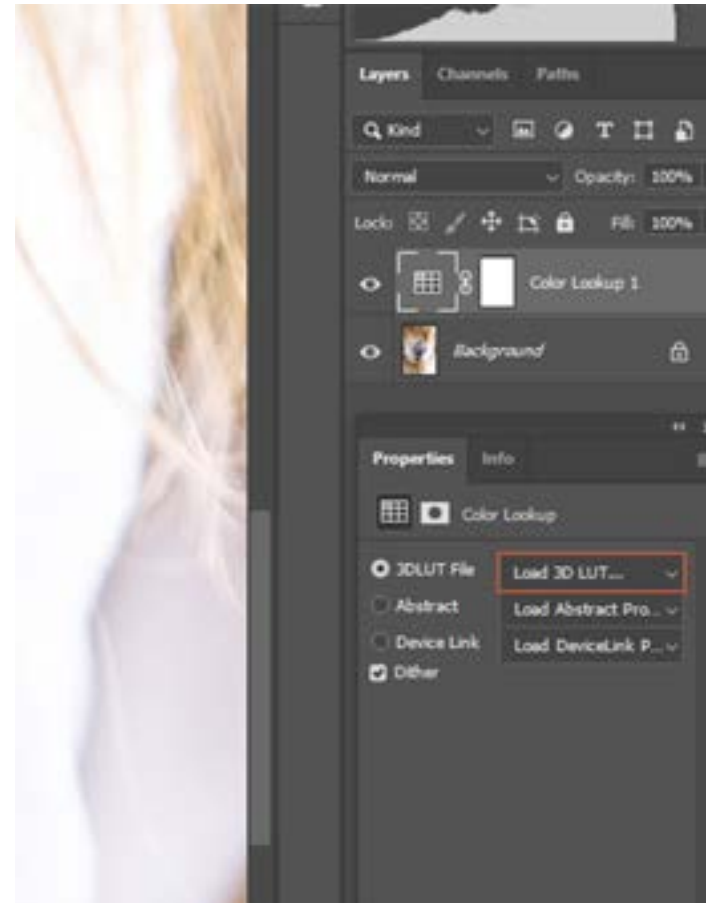
HOW TO INSTALL THE LUTS

PHOTOSHOP - QUICK INSTALLATION

This method is great for a one-time use application. LUTs will not be saved in Photoshop.

1. Open Photoshop and import the image you want to edit.
2. Create a Color Lookup Adjustment Layer.
3. Choose Load 3D LUT and locate the .CUBE files you downloaded.
4. Select any LUT and Photoshop will apply it to your image.

You're done!



HOW TO INSTALL THE LUTS

PHOTOSHOP - PERMANENT INSTALLATION

This method will save the LUTs in Photoshop, making it easier to access them whenever you want.

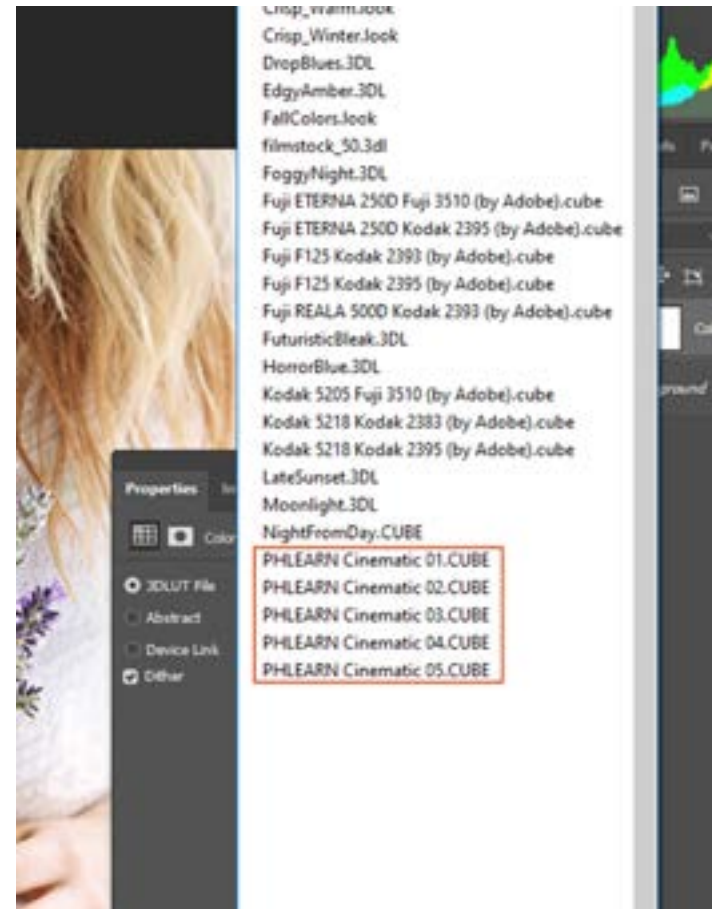
1. Use Finder (Mac) or Explorer (Windows) to locate the LUTs folder you downloaded.
2. Select all of the .CUBE files, right-click and select copy, and then paste them into the following folder:

Mac: Applications > Photoshop CC 2020 > Presets > 3DLUTs

Windows: C: > Program Files > Adobe > Adobe Photoshop CC 2020 > Presets > 3DLUTs

3. Open Photoshop and import the photo you want to edit. Add a Color Lookup Table Adjustment Layer. The new LUTs will be available in the Load 3D LUT drop-down menu.

You're done!



PHLEARN

SHOW OFF

At PHLEARN we're always looking to promote and showcase great work from awesome photographers and creatives around the world. If you're talented and have used any of our products in your photos then please let us know. Your photos can be published on our social media and website. Either way, this is a great way to get exposure and help us spread the word about our products.

To contribute just send us an email to support@phlearn.com please include relevant information, the products you used, as well as a link to your portfolio or attach your edited photos. You can also use the contact form on the website, tag [@phlearn](https://www.instagram.com/phlearn) on your photos, or use the hashtags below. We can't wait to see your work!

#PHLEARN
#MadeWithPHLEARN



PHLEARN



Check out our other products at www.phlearn.com, if you have questions email us at support@phlearn.com